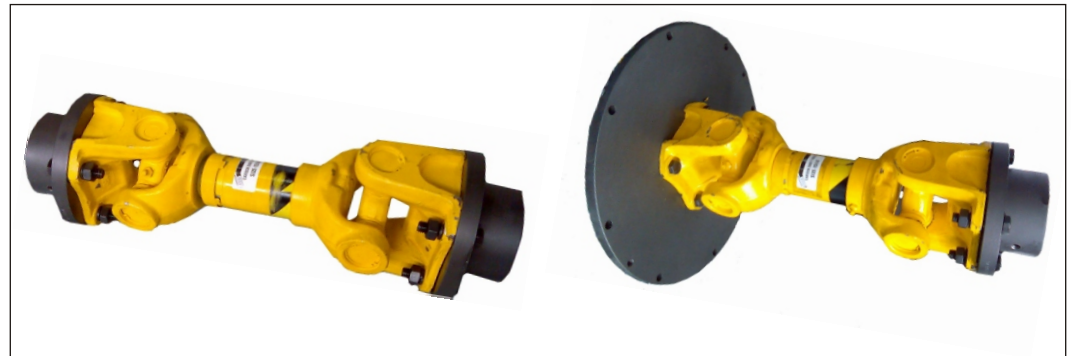


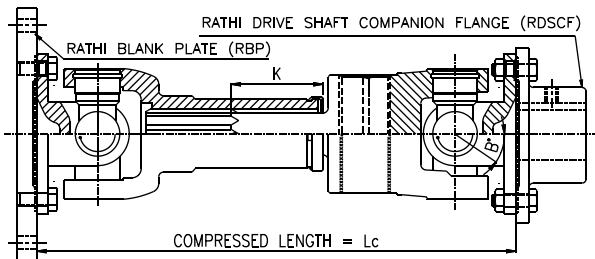
FEATURES:

- Easy in Installation
- Length Compensation
- Highly Efficient
- Low Maintenance

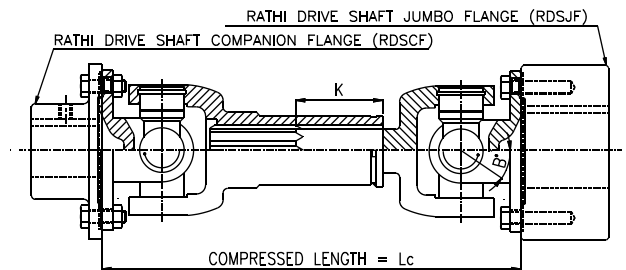


TECHNICAL DATA

TUBULAR DRIVE SHAFT



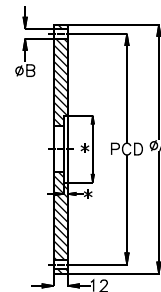
SUPER SHORT DRIVE SHAFT



RATHI DRIVE SHAFT COUPLING (RDC)

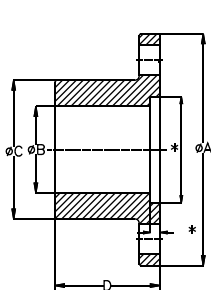
RDC Size	Angle B (Max.)	Slip Movement K	Compressed Length (LC)	
			Min.	Max.
1140 ●	14°	43	260	2500
1260 ● / 1310 ●	20°	50	335	2500
1350 ■ / 1410 ■	18°	57	356	2500
1510 ● / 1550 ■	18°	60	464/425	2500
1600 ●	20°	70	533	2500

RATHI BLANK PLATE (RBP) - SAE STD.



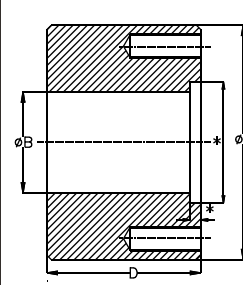
RBP Size	ØA	ØB	PCD	No. of Holes
RBP - 6 1/2"	8 1/2"	21/64"	7 7/8"	6
RBP - 7 1/2"	9 1/2"	21/64"	8 3/4"	8
RBP - 8"	10 3/8"	13/32"	9 5/8"	6
RBP - 10"	12 3/8"	13/32"	11 5/8"	8
RBP - 11 1/2"	13 7/8"	13/32"	13 1/8"	8

RATHI DRIVE SHAFT COMPANION FLANGE (RDSCF)



RDSCF Size	ØA	ØC	Max. Bore B	D
1140 ●	88	51	30	41
1260 ● / 1310 ●	97	60	38	48
1350 ■ / 1410 ■	125	72	42	48
1510 ● / 1550 ■	150	94	55	61
1600 ●	175	130	75	76

RATHI DRIVE SHAFT JUMBO FLANGE (RDSJF)



RDSJF Size	ØA	Max. Bore B	D
1140 ●	88	55	50
1260 ● / 1310 ●	97	60	63
1350 ■ / 1410 ■	125	70	76
1510 ● / 1550 ■	150	95	100
1600 ●	175	114	127

* Dimensions to suit respective drive shaft

● Round Flange ■ Rectangular Flange

All Dimensions are in mm otherwise specified

APPLICATIONS :-

Steel Plants & Rolling Mills, Textile, Paper & Printing Machinery, Cranes & Pump drive, Vibrating screens, Cement Industries, Earth Moving Equipments, etc.

SELECTION DATA

SELECTION PROCEDURE:-

- Locate the coupling size and torque (T) w.r.t. application speed (N) & power rating (P) from enclosed chart or graph.
- Determine appropriate service factor (SF) from service factor table.
- Calculate application maximum torque (T_M) using equation.
 $T_M = T \times SF$
- Ensure that application maximum torque (T_M) is less than short duration torque (T_s) from the table otherwise select next higher size.
- Ensure that maximum bore capacity of Companion or Jumbo flange is more than shaft dia. Otherwise select next higher size.
- If joint angle is more than 3° &/or bearing life required is more than 5000 Hrs. contact RATHI.

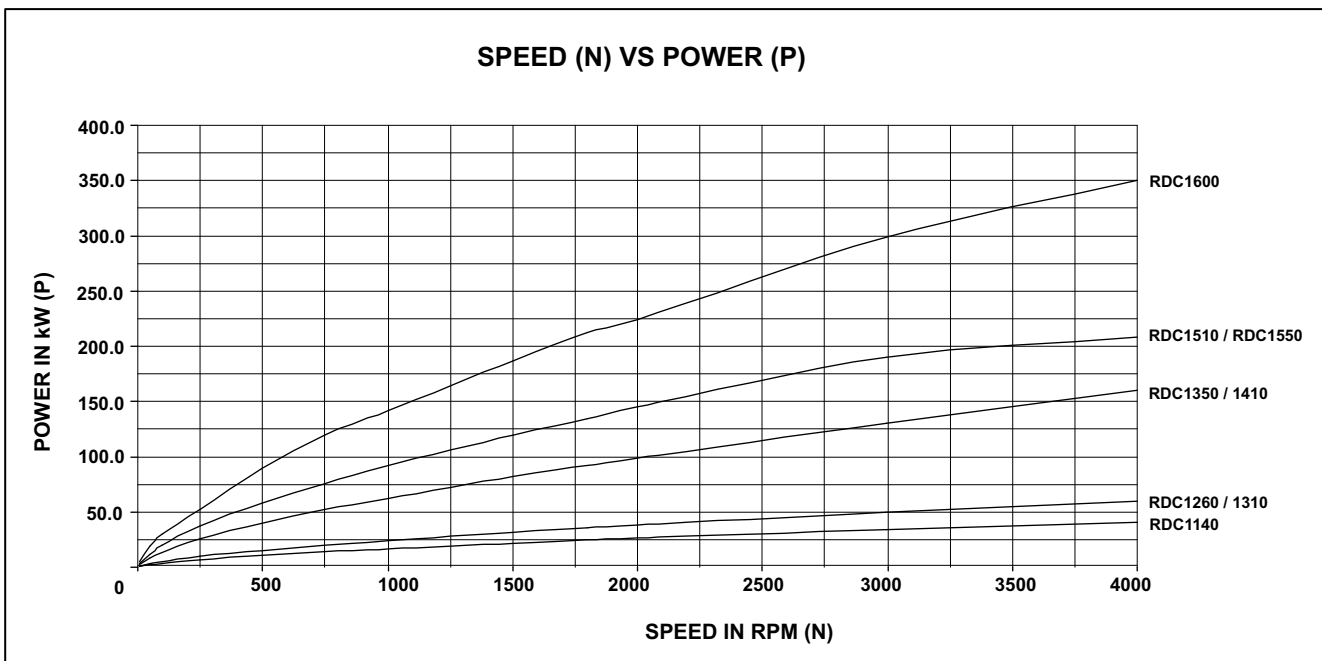
SERVICE FACTOR TABLE:

Light shock loads (continuous loads) Centrifugal pumps, fans, conveyors	1.1 to 1.5
Medium shock loads (Non-continuous loads) Centrifugal pumps & conveyors, printing machinery, small paper & textile machinery, Bar mills.	1.5 to 2
Heavy shock loads Roller tables, Presses, Heavy tube mills, pinch roll, Bending machine, Compressor, marine transmissions	2 to 3
Extra Heavy shock loads Roller tables, cold rolling mills, vibrating conveyors.	3 to 6

SIZE → SPEED ↓	RDC-1140		RDC-1260 / 1310		RDC-1350 / 1410		RDC-1510 / 1550		RDC-1600	
	T	P	T	P	T	P	T	P	T	P
N ↓ (RPM)	N-m	kW	N-m	kW	N-m	kW	N-m	kW	N-m	kW
10	571	0.6	800	0.8	2100	2.2	3200	3.4	4500	4.7
50	427	2.2	670	3.5	1610	8.4	2279	11.9	3704	19.4
100	356	3.7	513	5.4	1282	13.4	1923	20.1	2849	29.8
250	259	6.8	370	9.7	969	25.4	1425	37.3	1994	52.2
500	199	10.4	285	14.9	755	39.5	1111	58.2	1710	89.5
750	180	14.1	256	20.1	665	52.2	959	75.3	1520	119.4
1000	157	16.4	228	23.9	598	62.6	876	91.7	1353	141.7
1500	138	21.7	199	31.3	522	82.0	760	119.4	1187	186.5
1800	131	24.7	190	35.8	487	91.8	712	134.2	1128	212.6
2000	125	26.2	182	38.1	470	98.4	694	145.4	1068	223.7
3000	107	33.6	159	50.0	416	130.7	605	190.1	950	298.5
4000	98	41.1	142	59.5	383	160.4	498	208.6	837	350.6

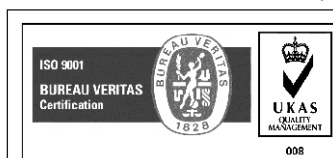
Nominal Ratings for smooth load, joint angle 3° per side max., 5000 hrs life at S.F.=1

SPEED (N) VS POWER (P)



Coupling Size	1140	1260 / 1310	1350 / 1410	1510 / 1550	1600
Short Duration Torque N-m (T _s)	571	800	2100	3300	4500

- While ordering place order for individual part.
 - All dimensions are in mm unless otherwise specified.
- In view of our constant endeavour to improve quality of our products, we reserve the right to alter or change specifications without prior notice. This document is the intellectual property of Rathi Transpower Pvt. Ltd. and subject to copyright.



Rathi Transpower Pvt Ltd
 Rathi Chambers, 7, Deccan College Road,
 Pune 411 006.(INDIA)
 Phone : 91-20-30517201
 Fax : 91-20-30517212
 E-mail : enquiry@rathigroup.com
 Website : www.rathicouplings.com

Distributor